

Brooklyn Children's Psychiatric Center

Brooklyn, NY



New 60-bed in-patient hospital complex located on two square blocks in the Brownsville section of Brooklyn.

Architect

Cannon, New York, NY

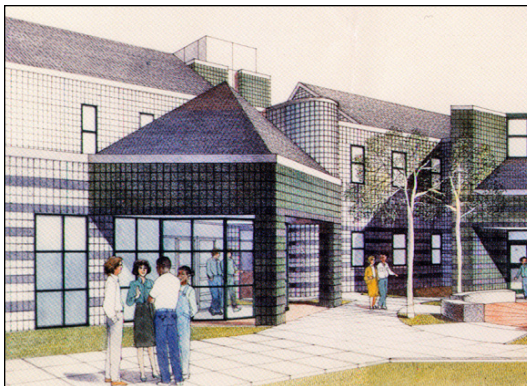
Client

Dormitory Authority of the State of NY (DASNY), New York, NY



Features

- residential clusters for 60 children and adolescents
- individual kitchen and dining facilities in each cluster
- an education wing with patient support facilities
- a 7,200 SF gymnasium with a two-and-a-half story vaulted ceiling and an indoor basketball court
- a 6,000 SF space for the swimming pool and full locker room facilities, a weight room, equipment and storage rooms, and offices adjacent to the gymnasium
- separate on-site day care facilities for staff members
- sitework included an outdoor basketball court, landscaping and surface parking



Services

Construction Management